

# KILOWATT

## RATE INCREASE APPROVED FOR 2023



Ryan Nelson, CEO

At the November board meeting the Kandiyohi Power Cooperative Board of Directors approved a rate increase beginning on January 1st, 2023. Our last increase to the access fee was in 2020, and the last time the energy charge was increased was 2016. You can view the new rates inside this issue of the Kilowatt or on our website [www.kp-coop.com](http://www.kp-coop.com).

After years of cost-containment measures, our recent Cost of Service Study indicated the need for a 9.55% increase in revenue. As a not-for-profit electric cooperative, our rates are designed not to make a profit, but simply to cover the costs of providing power to our member-owners. We do not take rate increases lightly, but in the long run, the cost of not raising rates now is certain to be higher.

In today's modern, connected world, having a source of safe, reliable, and affordable electricity is crucial. We're proud of our efforts to serve your needs with competitively priced electricity, responsive member service, proactive and necessary investments in the electric distribution grid, all while maintaining the financial ability to retire member-owner capital credits on a regular basis.

Unfortunately, KPC is seeing unprecedented cost increases in wire, transformers, poles, fuel, labor, benefits, and all costs associated with operating and maintaining a distribution electric cooperative. Our cost of power, which is 58.8% of our annual expense is increasing by 9.24%. This chart shows a handful of our commonly used materials, highlighting some of the challenges we've been facing with price increases this year compared to last.

	YOY % Increase
35' Wood Pole	50%
15 kVA Padmount Transformer	160%
1/0 Primary Underground Wire	41%
4/0 Primary Underground Wire	50%
Fuel	50%
CT Meter Socket	55%
Tantalus Meter Modules	31%

Since you are a member-owner of this cooperative, your concerns always are our main focus. We certainly appreciate your business and strive to be responsive to your need for safe, reliable, affordable electric service. These new rates are grounded in these principles. For a more specific breakdown of the impact of the change on your bills, please feel free to contact me personally, the KPC Member Services department, visit our website.

As energy prices rise, it's increasingly important to be as energy efficient as possible. There are many tips to reduce your bill available at [www.kpcoop.com/energy-conservation](http://www.kpcoop.com/energy-conservation). Contact us to learn more about our energy efficiency rebates, incentives, and programs available from your cooperative.

# Happy Holidays

From our co-op family to yours,  
wishing you a joyous holiday season  
and a happy and peaceful New Year!

OFFICE CLOSED: December 23 & 26

OFFICE CLOSED: January 2

MERRY CHRISTMAS

**CAPITAL CREDIT REFUNDS: YOU WILL BE RECEIVING YOUR CAPITAL CREDIT AND G&T REFUNDS ON THIS MONTHS ELECTRIC BILL. PLEASE REFER TO YOUR BILL FOR FURTHER INFORMATION ABOUT YOUR CREDIT.**

Kandiyohi Power <i>Residential, Small Commercial, Farm</i>	Current Rate	New Rate <i>January 1, 2023</i>
Access Fee	\$44.00 per month	\$48.00 per month
Energy Charge	\$0.1119 per kWh (June-August)	\$0.12826 per kWh (June-August)
	\$0.099 per kWh (other months)	\$0.10826 per kWh (other months)

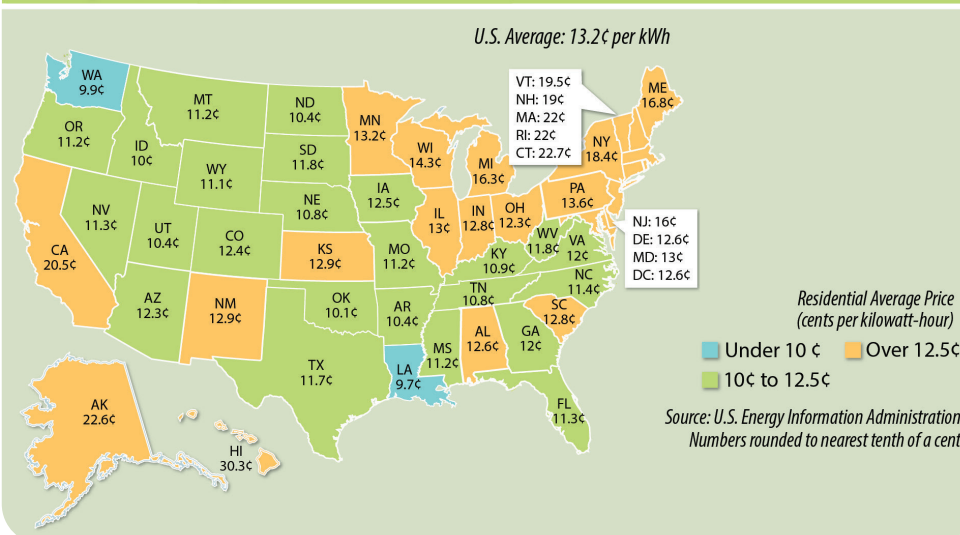
Kandiyohi Power <i>Commercial</i>	Current Rate	Current Rate <i>January 1, 2023</i>
Access Fee	\$65.00 per month	\$65.00 per month
Energy Charge	\$0.068 per kWh	\$0.068 per kWh
Demand Charge	\$18.75 per kW (June-August)	\$18.75 per kW (June-August)
	\$13.55 per kW (other months)	\$13.55 per kW (other months)

City of Kandiyohi <i>Residential, Small Commercial, Farm</i>	Current Rate	New Rate <i>January 1, 2023</i>
Access Fee	\$24.00 per month	\$40.00 per month
Energy Charge	\$0.105 per kWh (June-August)	\$0.11426 per kWh (June-August)
	\$0.095 per kWh (other months)	\$0.10426 per kWh (other months)

City of Kandiyohi <i>Commercial</i>	Current Rate	New Rate <i>January 1, 2023</i>
Access Fee	\$65.00 per month	\$69.00 per month
Energy Charge	\$0.048 per kWh	\$0.05726 per kWh
Demand Charge	\$7.26 per kW	\$8.26 per kW

## Average Prices for Residential Electricity

2020 figures, in cents per kWh

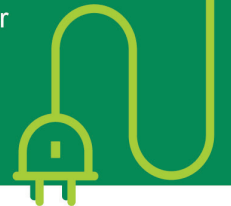


## Energy Efficiency Tip of the Month

Insulating your electric water heater can reduce standby heat loss by 25% to 45%, saving you 7% to 16% on annual water heating costs.

The Dept. of Energy rates this project as medium difficulty, meaning most homeowners can tackle this project on their own. You can purchase pre-cut jackets or blankets for about \$20 at most home improvement stores. Visit [energy.gov](https://energy.gov) for project tips and additional considerations.

Source: [energy.gov](https://energy.gov)



## Go cozy and confident.

**GET HELP AT HOME OR AWAY  
WITH THE PRESS OF A BUTTON.**

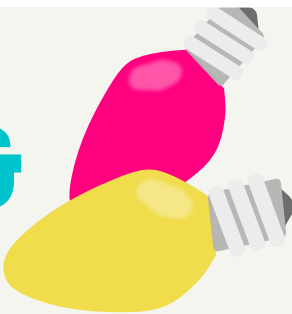
The Belle medical alert pendant has everything you need to keep your independence. Get help from anywhere 24/7, whether you're home or on your next adventure.

**Heartland  
Security**

SECURITY AUTOMATION VIDEO MEDICAL ALERTS  
888.264.6380 [heartlandss.com](https://heartlandss.com)

Keep Your Holidays

# MERRY & BRIGHT



Don't add stress to your holiday season. Knowing how to properly use and hang lights could prevent injury or fire.



Make sure your home's electrical system can handle the load.



Unplug lights or decorations before changing a bulb or other parts.



Do not use cords or plugs that are damaged, frayed or cracked.



Only use lights certified by a reputable testing lab.



In addition, consider LED lights when replacing old light strands. LEDs use 80 to 90% less energy than incandescent bulbs.

Learn more:



## BOARD MEETING SUMMARY

November 22, 2022

The Kandiyohi Power Cooperative Board of Directors held their regular monthly meeting. There were nine directors present. Chairman, Dale Anderson called the meeting to order.

Additions made to the agenda:

- CEO Review Discussion in Executive Session

The following reports were given:

- CEO Report
  - UCAP building expansion inquiries
  - Summit Carbon Solutions communications
  - ERTC requests
  - Visit from NISC Account Representative
- Member Services/Communications
  - GRE Member Strategist visit
  - EV Safety Training
  - Trunk or Treat recap
  - MREA Communicators Network
- Engineering Report
  - Safety and services update
  - Update on current projects
- Finance Report
  - 2023 Budget
  - Capital Credit Retirements
  - 2023 audit underway
- IS/Maintenance
  - Tantalus upgrades complete
  - Disaster recovery site
  - MN Rural Water Training
  - Old building maintenance update

CFC Cost of Service Study Presentation by Jefferson Choti, CFC Manager Utility Pricing, Policy & Analytics

MREA Voting Delegate

Policy Review

Board Meeting Schedule 2023

Resolution- Approval of the SMMPA PSC Contract

Audit Committee

Motions made and approved by the Board:

- Regular Agenda
- Consent Agenda
- CFC Rate Design Proposal
- Capital Credits
- MREA Voting Delegates
- In favor resolution for SMMPA PSC Contract
- Adjourn meeting

Executive Session

Meeting Adjourned – Next regular board meeting is December 28, 2022





8605 47th Street NE, Spicer, MN 56288  
www.kpcoop.com

**Office Hours: Mon.-Fri. 7:30am – 4pm**  
**Phone: 1-800-551-4951**  
**Fax: 320-796-0620**

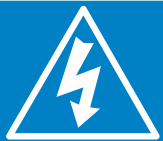
**Tom McCormick**  
**Electric Inspector: 320-221-2809**

Drop boxes available for your convenience  
at Cash Wise and our headquarters  
building near flag pole.

Ryan Nelson, CEO	320-796-1160
Michele Scheffler, Member/Communications	320-796-0982
Brent Hatlestad, Line Superintendent	320-796-1163
Patrick Krueger, CFO	320-796-0991

BOARD OF DIRECTORS:	District
Dale Anderson, Chair - 320-894-1687	1
Rollo Campe - 320-894-1601	1
Larry Powers - 320-212-7960	1
Dan Pomranke - 320-894-7113	2
Todd Post, VC - 320-212-1119	2
Stan Wubben, Secretary - 320-905-8325	2
Kelly Erickson - 320-894-2930	3
Diane Helgeson - 320-220-3745	3
Robbert Stone - 320-894-8867	3

**KILOWATT STAFF:**  
Michele Scheffler, Editor



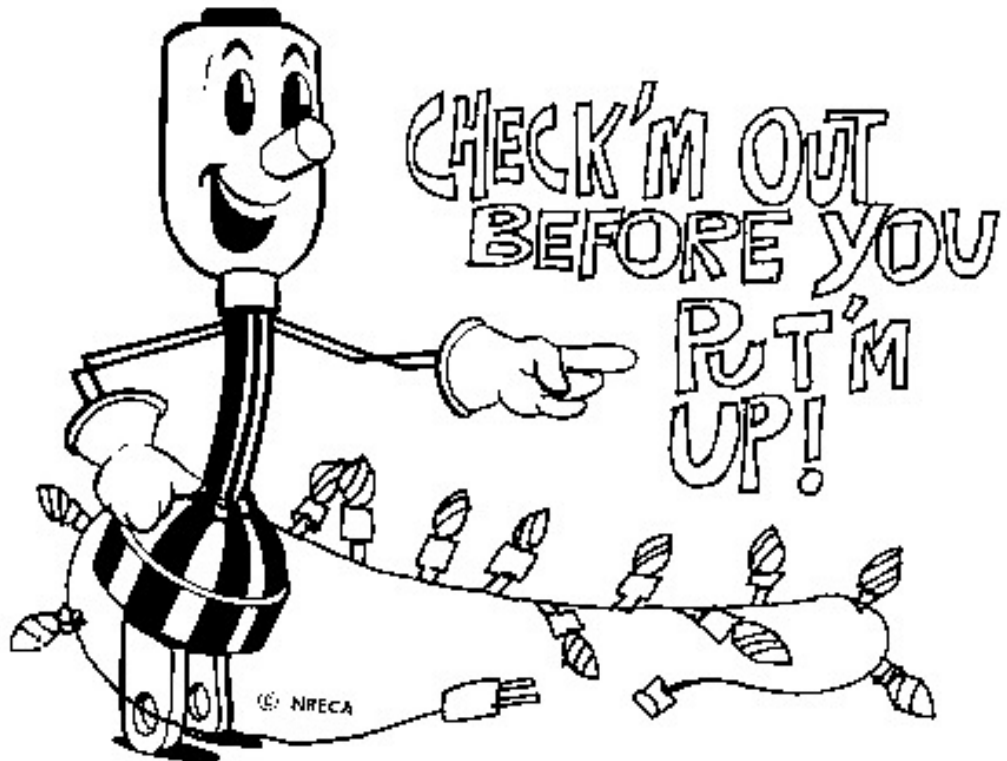
**24-HOUR  
OUTAGE  
NUMBER**

When your lights go out, so do we.

Call us if your power goes out even if you think your neighbors  
already did. Leave one light on so you know when power has  
been restored and make sure you have an emergency kit ready.

**1-800-551-4951**

The Cooperative will attempt to furnish continuous  
service but will not guarantee uninterrupted service.



There's nothing like putting up the lights and decorations to get you in the holiday spirit! It's something that many do every year out of tradition; from lighting up the Christmas tree, to lighting up the yard with lights and blow-up figurines. The fun, festive, holiday season is also one of the most hazardous times of the year when it comes to electrical fires and accidents.

Here are some tips to keep you safe as you deck the halls this season:

- When decorating outside, look up and around for power lines. Never throw lights or other decorations into trees near power lines.
- Keep ladders, equipment, and yourself at least ten feet from power lines.
- Match plugs with outlets. Do not force a three-pronged plug into a two-pronged outlet or extension cord.
- Outside, use only lights, cords, animated displays, and decorations rated for outdoor use. Follow the manufacturer's instructions on how to use them. Ensure outdoor outlets or extension cords are equipped with Ground Fault Circuit Interrupters (GFCI's).
- Never string multiple strands of lights together more than what is recommended by the manufacturer.
- Do not staple or nail through strings of lights or electrical cords. Use plastic or insulated hooks to hang lights.
- Do not attached cords to utility poles.

The outside of your home is not the only place where you need to be cautious of electrical dangers. You should be careful when placing or decorating trees inside your home. Place fresh-cut and artificial trees away from any hear source such as registers, fireplaces, and radiators; water fresh-cut trees frequently. Make sure to turn off all your holiday lights or set timers to shut them off before you go to sleep



**October's \$25 Auto Pay Winner: Teresa & Mark Olson**

Enroll in our Auto Pay program to be entered into a monthly drawing for a \$25.00 bill credit. Save time and money!

Must be on Auto Pay to be eligible to win. You can also select email as your only delivery option. You will then receive an email instead of a paper bill when your bill is ready for payment.