

# KILOWATT

## CREWS WORK QUICKLY, SAFELY WHEN STORMS KNOCK DOWN POWER LINES

When the lights go out Kandiyohi Power Cooperative crews spring to action. We work with Great River Energy, our wholesale electric supplier, to restore power quickly and safely. Severe Weather Awareness Week, April 12-16, is a good time to refresh your knowledge on what to do if your power goes out and how your power is restored.

Some outages are very brief, but when severe weather leaves widespread damage, outages can last longer. At the same time homeowners start gathering flashlights, crews of line technicians are dispatched to restore power as quickly as possible.

To prepare for a power outage:

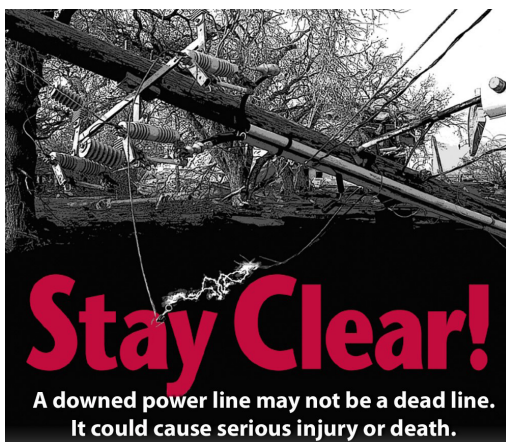
- Create an emergency kit with food, supplies and flashlights
- Have a place to store food safely
- Know how to check breakers and fuses during a power outage
- Test your generator if you have one available

Learn more about preparing for a power outage at Great River Energy's YouTube page or at <https://bit.ly/2KxclwV>.

When cooperatives get to work restoring power, safety is always the top priority. Crews give immediate attention to dangerous situations, such as downed power lines on roadways or streets. Typically, local police or fire station personnel are called to secure the area until electric cooperative employees can restore power.

It's important to stay away from downed power lines, and to treat all downed power lines as though they are energized. If you run over a downed power line, stay in your vehicle and call 911. If you can't stay in your vehicle, jump with both feet together and shuffle away from the downed power line.

Electric cooperatives regularly update emergency response plans to prepare for outages. Employees train for major events and understand their role in the power restoration process. Electric co-ops also subscribe to mutual aid agreements, which allows them to get assistance from neighboring utilities when major power outages occur.



If someone is injured by contact with a power line, call 911 and keep others away until help arrives.

If a power line falls across or near your vehicle while you are in it, stay inside until help arrives. If you must exit, jump clear so that no part of your body is touching the car when you land. **KEEP BOTH FEET TOGETHER**, and shuffle or hop at least 30 feet away from the vehicle.

### SAVE THE DATE

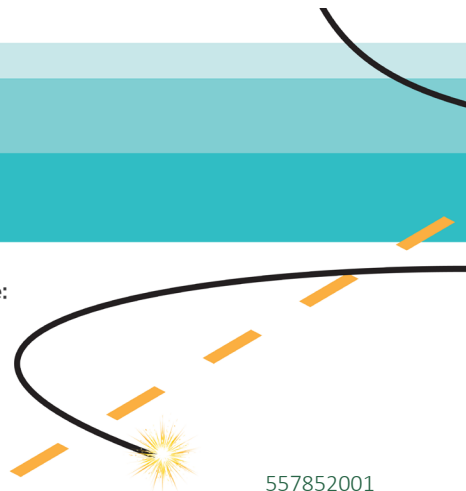
#### KPC Annual Meeting

Our Annual Meeting will be held virtually this year, as a Microsoft Teams Live Event. The Annual Meeting will begin at 9:00 am on April 27, 2021. The link to the live event will be posted on our website and on our Facebook page. The Annual Meeting is an opportunity to visit with your Board of Directors and to hear what is happening at your cooperative. We hope that you can join us for our first ever virtual Annual Meeting!

## Downed and Dangerous

Always assume a downed power line is energized and dangerous! If you see one:

- Notify local authorities.
- Stay at least 35 ft. away.
- Never drive over a downed line, or through water touching one.
- Never try to move a downed line.



557852001

## "TRANSITIONS INTO NEW POSITIONS" WHO'S WHO AND WHO'S NEW

With a round of retirements, KPC Management felt that this would be the perfect opportunity for re-structuring within the cooperative.

Ryan Nelson, Manager of Engineering and Operations, has been named interim CEO. While filling in as CEO, Nelson will continue his Engineering and Operations duties at this time. Operations and Engineering departments are combining, having one manager.



Ryan Nelson, Interim CEO  
Manager of Engineering/  
Operations

Project Manager, Brent Hatlestad, has been promoted to Line Superintendent. Some of Brent's Project Manager duties will remain in his new role as Line Superintendent.



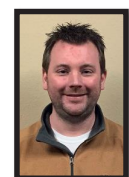
Brent Hatlestad  
Line Superintendent

Communications and HR Manager, Michele Scheffler has been promoted to Member Services Manager and will carry with her the Communications and HR obligations as well. Member Services also introduces two new faces, Jean Nesburg and Ashley Hauge. These Member Service Reps assist members with billing, etc.



Michele Scheffler  
Manager of Member Services  
Communications/HR

Bryan Ashburn, IT, was promoted to Network Administrator. Ashburn will be responsible for all our IT needs and building preservation.



Bryan Ashburn  
Network Administrator

New to our team, Patrick Krueger, Lead Accountant and Ashley Veeder, Plant Accountant (formerly Member Services Rep), now make up our Finance department, with Steph Jakel serving as interim Finance Manager.

It can be a challenge to lose employees to retirement and the many years of experience and knowledge that goes with them, but we are confident in our team, their fresh ideas, understanding of KPC's culture and the essential role they each play in the future of Kandiyohi Power Cooperative.



**Kandiyohi Power Cooperative**

Your Touchstone Energy® Partner 

8605 47<sup>th</sup> Street NE  
Spicer, MN 56288-0040  
Phone #: 800-551-4951  
Fax #: 320-796-0620 \* [www.kpcoop.com](http://www.kpcoop.com)


### NOTICE OF THE ANNUAL MEMBERS' MEETING of the KANDIYOHI POWER COOPERATIVE

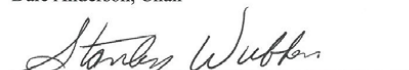
NOTICE IS HEREBY GIVEN, that the Annual Meeting of the Members of the Kandiyohi Power Cooperative (KPC) will be held virtually on Tuesday, April 27, 2021. The Annual Business Meeting of the Members will be called to order at 9:00 a.m. The following business will be transacted:

- 1) To hear, examine and approve the reports of the officers, directors, and committees.
- 2) To elect three (3) Directors for said Association for the ensuing term.
- 3) For the transaction of such other and further business as may lawfully be brought before the membership of the Association, and as may be deemed to be in the best interest of the Association.

DATED: Spicer, Minnesota, February 24th, 2021

BY ORDER OF THE BOARD OF DIRECTORS

  
Dale Anderson, Chair

  
Stanley Wubben, Secretary



**Go with confidence.**

Our Belle mobile medical alert system uses the latest technology and is certified on the Verizon 4G LTE network.

Our 24/7 monitoring and local in-person installation and service give you peace of mind.

**Heartland Security**  
888.264.6380  
[heartlandss.com](http://heartlandss.com)

YOUR VOTE MATTERS

Official ballots will be mailed out on April 12th, for election of Board Directors in Districts 2 & 3. You will vote for only one candidate in each district. Ballots must be returned by April 26th, no later than 4:00 p.m.

- District #1 candidate:
  - Rollo Campe (Incumbent)  
– Winner by acclamation because no one else ran for this district.
- District #2 candidates:
  - Todd Post (Incumbent)
  - Bruce Shuck
- District # 3 candidates:
  - Nathan Brown
  - Ryan Erickson
  - Darrell Fostervold (Incumbent)
  - Jake Vlaminck

Each candidate profile is on the ballots. Become familiar with each candidate. This is your co-op, and your vote is crucial to the future of our success. Winners will be announced at the Annual Meeting, April 27.

848133001

848133001

KILOWATT  
CREDIT SCORECARD  
Win a credit on your next bill.

Account numbers used are 9 digits, as appearing on your monthly bill. If you find your account number in this KILOWATT, please notify us by the 4th to claim your credit.  
We will credit your bill. Do not deduct the amount from your bill; pay as usual. Noone found their account number for a \$5 credit.  
Each account number is worth \$5.00.

STATEMENT OF REVENUE & EXPENSE

ITEM	2019	2020
<b>Operating Revenue &amp; Patronage Capital</b>	<b>\$20,676,685</b>	<b>\$21,081,856</b>
<b>Cost of Purchased Power</b>	<b>\$12,072,280</b>	<b>\$11,897,147</b>
Distribution Expense- Operations	\$1,241,928	\$1,357,086
Distribution Expense- Maintenance	\$840,212	\$913,833
Consumer Accounts Expense	\$400,139	\$400,992
Consumer Service and Informational Expense	\$431,461	\$438,135
Sales Expense	\$2,150	\$2,500
Administrative and General Expense	\$1,902,718	\$1,627,503
<b>Total Operation &amp; Maintenance Expense</b>	<b>\$16,890,888</b>	<b>\$16,637,245</b>
Depreciation and Amortization Expense	\$2,235,600	\$2,375,778
Interest on Long Term Debt	\$1,237,186	\$1,279,754
Interest Expense- Other	\$35,669	\$28,608
Other Deductions	(\$18,321)	(\$16,351)
<b>Total Cost of Electric Service</b>	<b>\$20,381,022</b>	<b>\$20,305,033</b>
Patronage Capital & Operating Margins	\$295,663	\$776,823
Non Operating Margins- Interest	\$56,313	\$51,220
Non Operating Margins- Other	\$52,495	\$111,271
Generation and Transmission Capital Credits	\$341,340	\$287,127
Other Capital Credits and Patronage Dividends	\$143,822	\$134,842
<b>Patronage Capital or Margins</b>	<b>\$889,633</b>	<b>\$1,361,283</b>

BALANCE SHEET AS OF DECEMBER 31  
ASSETS

	2019	2020
<b>Total Utility Plant in Service</b>	<b>\$69,237,861</b>	<b>\$70,574,497</b>
Construction Work in Progress	\$1,428,651	\$3,196,227
<b>Total Utility Plant</b>	<b>\$70,666,512</b>	<b>\$73,770,724</b>
Accum Provision for Depr.& Amort.	\$19,802,346	\$21,596,910
<b>Net Utility Plant</b>	<b>\$50,864,166</b>	<b>\$52,173,813</b>
Nonutility Property- Net	\$162,899	\$1,309,974
Investment in Subsidiary Companies	\$491,496	\$501,696
Invest in Assoc Org. Patronage Capital	\$9,593,791	\$9,734,300
Invest Assoc Org-Other-General Funds	\$16,500	\$17,142
Invest Assoc Org-Other-Nongeneral Funds	\$1,670,826	\$1,671,440
Investments in Economic Development Projects	\$1,745	\$1,745
Other Investments	\$2,861	\$0
<b>Total Other Property &amp; Investments</b>	<b>\$11,940,118</b>	<b>\$13,236,298</b>
<b>Cash-General Funds</b>	<b>\$95,870</b>	<b>\$207,771</b>
Temporary Investments	\$7,139	\$932,503
Accounts Receivable-Net Sale of Energy	\$2,793,843	\$2,715,363
Accounts Receivable-Net Other	\$177,580	\$106,675
Materials & Supplies-Electric & Other	\$1,487,167	\$1,517,937
Prepayments	\$3,652	\$0
Other Current & Accrued Assets	\$12,206	\$12,168
<b>Total Current &amp; Accrued Assets</b>	<b>\$4,577,457</b>	<b>\$5,492,416</b>
<b>Other Deferred Debits</b>	<b>\$1,252,510</b>	<b>\$1,000,109</b>
<b>Total Assets &amp; Other Debits</b>	<b>\$68,634,261</b>	<b>\$71,902,636</b>

LIABILITIES

<b>Patronage Capital</b>	<b>\$28,803,803</b>	<b>\$28,931,838</b>
Operating Margins-Current Year	\$295,663	\$776,823
Non Operating Margins	\$756,427	\$746,916
Other Margins & Equities	\$3,331,878	\$3,472,781
<b>Total Margins &amp; Equities</b>	<b>\$33,187,771</b>	<b>\$33,928,357</b>
<b>Long Term-Debt</b>	<b>\$29,544,935</b>	<b>\$30,820,013</b>
<b>Other Noncurrent Liabilities</b>	<b>\$57,632</b>	<b>\$43,348</b>
<b>Checks In Excess of Bank Balance</b>	<b>\$163,692</b>	<b>\$0</b>
<b>Notes Payable</b>	<b>\$203,519</b>	<b>\$1,192,867</b>
Accounts Payable	\$2,701,533	\$2,888,860
Consumers Deposits	\$54,486	\$54,257
Current Maturities Long-Term Debt	\$1,283,000	\$1,408,000
Other Current & Accrued Liabilities	\$1,071,865	\$1,038,296
<b>Total Current &amp; Accrued Liabilities</b>	<b>\$5,478,095</b>	<b>\$6,580,279</b>
<b>Deferred Credits</b>	<b>\$365,818</b>	<b>\$530,640</b>
<b>Total Liabilities &amp; Other Credits</b>	<b>\$68,634,251</b>	<b>\$71,902,636</b>

STATISTICAL FACTS

8,816kWh's Sold

Year-end 2020

\$166,037,390





# Kandiyohi Power Cooperative

8605 47th Street NE, Spicer, MN 56288  
www.kpcoop.com

**Office Hours: Mon.-Fri. 7:30am – 4pm**

**Phone: 1-800-551-4951**

**Fax: 320-796-0620**

**Tom McCormick**

**Electric Inspector: 320-221-2809**

Drop boxes available for your convenience  
at Cash Wise and headquarters building  
near flag pole.

## MANAGEMENT STAFF

Michele Scheffler,  
Member/Communications/HR 796-0982  
Ryan Nelson,  
Engineering/Acting GM 796-1173  
Brent Hatlestad, Line Superintendent

## BOARD OF DIRECTORS:

	District
Dale Anderson, Chair- 320-894-1687	1
Rollo Campe- 320-894-1601	1
Larry Powers- 320-212-7960	1
Dan Pomranke, VC- 320-894-7113	2
Todd Post- 320-212-1119	2
Stan Wubben, Secretary- 320-905-8325	2
Darrell Fostervold - 320-212-4824	3
Diane Helgeson- 320-220-3745	3
Robbert Stone- 320-894-8867	3

## KILOWATT STAFF:

Robin Ryks, Editor

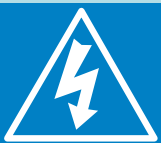
91335002



**CALL BEFORE YOU DIG!!!**

[www.gopherstateonecall.org](http://www.gopherstateonecall.org)

**1-800-252-1166**



## 24-HOUR OUTAGE NUMBER

When your lights go out, so do we.

Call us if your power goes out even if you think your neighbors  
already did. Leave one light on so you know when power has  
been restored and make sure you have an emergency kit ready.

**1-800-551-4951**

## SPRING HAS SPRUNG

Cold Weather Rule payment plans end April 15th. Make sure you contact Kandiyohi Power Cooperative at 1-800-551-4951 with any questions/concerns. Your service could be shut off if you have a past-due balance on April 15th. If you need help paying your electric bill and fall within the required income guidelines, you might qualify for assistance. The following is a list of local agencies that may help:

- United Community Action Agency – 320-235-0850 or 1-800-992-1710
- Prairie Five Community Action – 320-269-7976 or 1-800-282-5437
- Salvation Army – 320-235-2033
- Tri-County Action Agency – 320-251-1612 or 1-888-765-5597
- Kandiyohi County Family Service – 320-231-7066
- Renville County Energy Assistance – 320-523-5522 or 1-800-450-2071
- The Link (New London/Spicer area only) – 320-354-5555

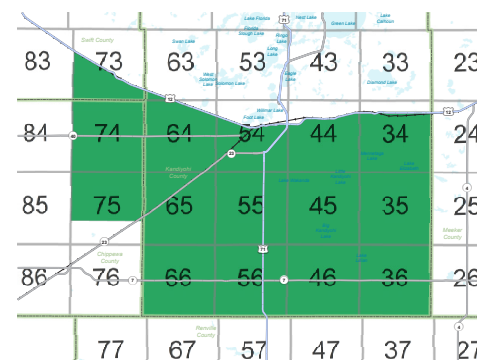


### COLOR CODE FOR MARKING UNDERGROUND UTILITY LINES

- Proposed Excavation
- Temporary Survey Markings
- Electric
- Gas-Oil-Steam-Propane
- Communication-CATV-Fiber
- Water
- Reclaimed Water-Irrigation
- Sewer

## TREE TRIMMING

Tree trimming has begun. We again have contracted TreeStory to do our tree trimming and ground clearing. Their trucks should be clearly marked with their TreeStory logo. Throughout the year, they will be working south of a line with Highway 12 to our southern boundary. Prior to trimming, a door hanger is placed on members' doors, notifying them of the work to be done. Maintaining clearances around our facilities is critical to providing safe and reliable power to our members. Thank you for your cooperation!



848496001