

# KILOWATT

HAPPY  
*Father's Day*  
To All Our Awesome Dad's!



## DIVERSITY

ARTICLE BY: SCOTT FROEMMING, CEO

This word has a lot of different connotations in today's world. For some it is a desired state where all groups and subgroups of our society are equally represented in all our businesses and institutions. It is equated with inclusiveness – nobody is left out. Then we have diversity of ideas, opinions or principles, which can be rooted in political affiliations, religions, ethnicity or the limitless creativity of the human mind. Diversity when done properly whether related to people groups or thought groups is a work of art. It is like a skillfully sown quilt made of many different colorful patches which form beautiful patterns and more importantly function as one unit to form a warm and inviting covering.

Unfortunately, today diversity is in many instances driving us apart. Some

people feel threatened by differences in appearance, ethnicity, ideas, etc.; others feel threatened because they feel diversity is being forced upon them and the scales are being tipped too far the other way. In either case, they feel like they are being disrespected, devalued, censored, effectively excluded from the quilt.

Two of the principles on which our great country was founded are that all men (and women) are created equal and the freedom of speech. The underlying thought here is no matter how diverse our appearance or background, we all have equal value and no matter how diverse our ideas, we have the right to express them without fear of retribution. These foundational principles embrace diversity and have played a huge role in making the United States the greatest country in the world. **Diversity does not have to be divisive!**

In the energy world, a lot of the diversity discussions center around what's the best source of energy. Should our electricity

come from coal, wind, solar, gas or some combination of all of them. A couple of months ago I wrote about how I thought energy mandates were counterproductive. I received a thoughtful letter from a member who disagreed with my position. After reading his letter, I have a better understanding of why some would propose mandates. He didn't change my mind, but I respect his opinion and his right to express it.

The answers to complex problems usually lie somewhere in between the extreme positions. I believe the solutions lie in a diversity of ideas and perspectives while applying our founding principles of free speech and equality to the conversations. Let's make sure no one is excluded from the table and then let's have a quilting bee. Let's take the best ideas from each group and sew them together into a skillfully crafted beautiful energy policy quilt that will keep our children and grandchildren warm and comfortable for many years to come!



**SAVE THE DATE  
GET STUNG  
WITH THE FUN!**

Customer Appreciation  
Stingers Game July 10th

SEE ENCLOSED FLYER AND RESERVE YOUR TICKETS NOW



**KPC OFFICES WILL BE CLOSED ON  
JULY 4TH IN OBSERVANCE  
OF INDEPENDENCE DAY.**



# SMART PAYMENTS



**Kandiyohi Power Cooperative**  
Your Touchstone Energy® Cooperative



**Save time. Avoid service interruptions. Eliminate late fees.**

With SmartHub, you'll be notified when your bill is due and can pay securely online or in the app, anytime, anywhere.

Sign up for autopayments, set up your secure preferred payment method and let account management go into autopilot.

...All in the palm of your hand and online.



## WHAT IS SMARTHUB?

SmartHub is a web and mobile app that allows you to take control of all aspects of your utility account. Pay your bill, manage your use and contact us with service issues quickly and easily online or on your mobile device.



Manage Your Account



View and Pay Your Bill



Monitor Usage 24/7



Report Service Issues



Receive Important Updates

## SMART COMMUNICATION

SmartHub goes beyond bill payments and usage tracking. This online and mobile app is also a powerful communication tool. Report service interruptions and route account inquiries on the go. Be in the know with alerts for service work, news promotions and events...all in the palm of your hand and online.

## SMART ENVIRONMENT

Going paperless with SmartHub is easy. With convenient access to your bill anytime, anywhere, doing your part to save the environment is easy too.

## SMART PAYMENTS

With SmartHub, you'll be notified when your bill is due and can pay securely online or in the app, anytime, anywhere. Sign up for auto payments, set up your secure preferred payment method and let account management go into auto pilot.

## SMART USAGE

Saving money just got easier. Track your usage and take the guesswork out of your bill. Through detailed graphs, you'll be able to monitor usage 24/7 and track your consumption, finding ways to reduce and save.

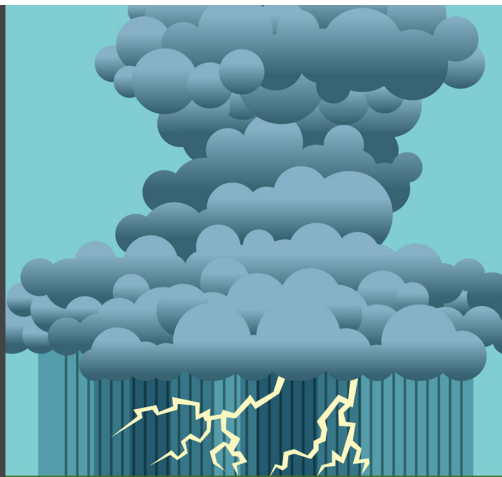
995393001

**SMART MANAGEMENT. SMART LIFE. SMARTHUB.**

## Shocking Facts About Lightning

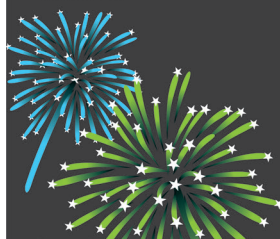
- There are 25 million cloud-to-ground lightning flashes annually in the U.S.
- Every year, 300 Americans are struck by lightning.
- Of those struck, 30 are killed and others suffer lifelong disabilities.

**#StormSafety**



## FIREWORKS SAFETY TIPS

Fireworks and the Fourth of July go hand-in-hand, and we want you to have a safe, fun-filled celebration! About two-thirds of all fireworks-related injuries occur between June 16 and July 16, so keep these safety tips in mind:



- ★ Make sure fireworks are legal in your community before using them.
- ★ Never buy professional-grade fireworks. They are not designed for safe consumer use.
- ★ Keep small children a safe distance from all fireworks including sparklers which can burn at temperatures in excess of 2,000 degrees.
- ★ Never reignite or handle malfunctioning fireworks. Keep a bucket of water or garden hose nearby to thoroughly soak duds before throwing them away.
- ★ Keep pets indoors and away from fireworks to avoid contact injuries or noise reactions.

462858003



## Keep your most precious valuables safe with Heartland Security.

Our interactive security systems protect your home and family from intruders, carbon monoxide, fire, and other threats.

**1-888-264-6380**  
**heartlandss.com**



**Kandiyohi Power Cooperative**  
Your Touchstone Energy® Partner





## KANDIYOHI POWER CHARITABLE TRUST – OPERATION ROUNDUP®

Through Operation RoundUp®, Kandiyo Power Cooperative customers join together to help neighbors facing crises. Voluntary contribution of approximately \$11 a year per customer help these people get back on their feet. With Operation RoundUp®, small change changes lives.

### How can you help?

We make it easy. Call our office and we'll simply round your electric bill up to the next highest dollar each month. The extra change – an average of \$11 a year – is your contribution to the program. If you wish to discontinue your contribution at any time, simply contact KPC.

### How are the funds used?

Operation RoundUp® funds stay right here in the KPC service area. Guidelines for awarding this money address needs such as food, clothing, shelter, health care and other community services. Funds are never used for political or administrative purposes. Following is just a small list of those whose lives you can impact:

- Local rescue squads
- Children and adults with disabilities
- Youth programs
- Programs that keep seniors in their homes and communities
- Family in a major crisis due to illness, etc.
- Many organizations serving our surrounding communities

### Who distributes the funds?

The Kandiyo Power Charitable Trust board of trustees administers the program, an independent board of community leaders who establish the policies for granting Operation RoundUp® funds.

Contributions to Operation RoundUp® are tax deductible. We'll mail you, upon request, a summary of your annual contribution at the end of the year. KPC will also use the KILOWATT to keep you informed about how and when funds are distributed.

### What do I do if I need help?

If you are facing crisis or belong to a group who serves persons in the KPC service area, Operation RoundUp® may be able to help. Go to [www.kpcoop.com](http://www.kpcoop.com) to download an application or call Robin at 1-800-551-4951 or 320-796-0987 for more information. Please note that when applying for a donation you must have the formal application filled out and returned.

Current Board of Trustees:

- Patti Hagen – President – District 1
- Kathy Rowan – Vice-President – District 1
- Sharon Oleson – Secretary – District 2
- Tim Helgeson – District 3
- Kathy Steffensen – District 1
- Open 2 Seats – District 2
- Open 2 Seats – District 3
- Diane Helgeson – KPC Board Representative

We have 4 seats open due to terms ending. If you are interested in joining this Board of Trustees, give Robin a call at 320-796-0987. The Board meets quarterly, months of January, April, July and October. Meetings usually take 1 to 1 ½ hours and are held the 3<sup>rd</sup> Wednesday of the month.

33875001

### OPERATION ROUND UP DONATIONS?

Roosevelt Elementary	\$1000
Spotlight Theatre Workshop	\$ 500
Kandiyo County Area YMCA	\$1500
Atwater Area Historical Society	\$ 500
Kindred Family Focus	\$ 500
Spicer Public Library	\$1000
Lets Go Fishing	\$ 750
United Community Action	\$ 500
Lullaby Quilters	\$ 500
BBE Public School	\$ 500
Dream Tech Academy Post Prom	\$ 200
KMS Post Prom	\$ 200
BOLD Post Prom	\$ 200
CMCS Post Prom	\$ 200
NLS Post Prom	\$ 200
Kandiyo Cnty Historical Society	\$1000
New London Ambulance	\$1000
Prinsburg First Responders	\$1000
Lake Lillian Ambulance	\$1000
Raymond First Responders	\$1000



## BUDGET 2019

Balance of "Budget" accounts will be billed in July and due August 1<sup>st</sup>. The new budget amount will be calculated for next year and shown on our July bill. If you are not currently on our "Budget Plan" and have been on our system for 12 months, now is the time to sign up. Call Jan at 1-800-551-4951.

## Rhubarb and Strawberry Coffee Cake

### Fruit Filling:

- 3 Tbsp sugar
- ¾ C chopped fresh strawberries
- ¾ C chopped fresh or frozen rhubarb
- 1 Tbsp water

### Filling:

- 1 pkg (8 oz) cream cheese, softened
- 1/4 cup sugar
- 1 large egg, lightly beaten

### Cake:

- 2 C all-purpose flour
- ¾ C sugar
- ½ C cold butter, cubed
- ½ tsp baking powder
- ½ tsp baking soda
- ¼ tsp salt
- 1 large egg, room temperature, lightly beaten
- ¾ cup fat-free sour cream
- 1 tsp vanilla extract



### Directions

Preheat oven to 350 degrees. Line bottom of greased 9" springform pan with parchment; grease parchment. In a small saucepan, mix cornstarch and sugar; stir in strawberries, rhubarb and water. Bring to a boil. Reduce heat, simmer, uncovered, until thickened, 6-8 minutes, stirring occasionally. For filling, in a small bowl, beat cream cheese and sugar until smooth. Beat in egg. In a large bowl, combine flour and sugar; cut in butter until crumbly. Reserve ¾ cup for topping. Stir baking powder, baking soda & salt into remaining flour mixture. In a small bowl, whisk egg, sour cream and vanilla until blended; gently stir into flour mixture (do not overmix). Spread batter onto bottom and ½ in. up sides of prepared pan. Spread filling over crust, leaving a ½ in. border around edge of pan. Spoon strawberry mixture over top; sprinkle with reserved crumb mixture. Bake until edges are golden brown, 50-60 minutes. Cool on a wire rack 20 minutes. Loosen sides from pan with a knife. Cool completely. Remove rim from pan. Refrigerate leftovers.





# Kandiyohi Power Cooperative

8605 47th Street NE, Spicer, MN 56288  
www.kpcoop.com

**Office Hours: Mon.-Fri. 7:30am – 4pm**

**Phone: 1-800-551-4951**

**Fax: 320-796-0620**

**Tom McCormick**

**Electric Inspector: 320-221-2809**

Drop boxes available for your convenience  
at Cash Wise and headquarters building  
near flag pole.

## MANAGEMENT STAFF

Scott Froemming, CEO

Anthony Stern, CFO

Diane Maurice, Marketing/Customer Service

Ryan Nelson, Engineering

Scott Luberts, Line Superintendent

## BOARD OF DIRECTORS:

Dale Anderson, Chair- 320-894-1687

Rollo Campe- 320-894-1601

Larry Powers- 320-212-7960

Dan Pomranke, VC- 320-894-7113

Todd Post- 320-212-1119

Stan Wubben, Secretary- 320-905-8325

Darrell Fostervold - 320-212-4824

Diane Helgeson- 320-220-3745

Robbert Stone- 320-894-8867

## District

1

1

1

2

2

2

3

3

3

## KILOWATT STAFF:

Robin Ryks, Editor



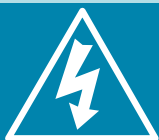
**CALL BEFORE YOU DIG!!!**

www.gopherstateonecall.org

**1-800-252-1166**



137850001



## 24-HOUR OUTAGE NUMBER

When your lights go out, so do we.

Call us if your power goes out even if you think your neighbors  
already did. Leave one light on so you know when power has  
been restored and make sure you have an emergency kit ready.

**1-800-551-4951**

## STAY BACK AND STAY SAFE

Working with electricity can be a dangerous job, especially for lineworkers. In fact, *USA Today* lists line repairers and installers among the most dangerous jobs in the U.S. That's why for Kandiyohi Power Cooperative, safety is the number one priority. This is not empty talk. Over time, we have created a culture of putting our crews' safety and that of the community above all else.

Our mission is to provide safe, reliable and affordable energy to you, our consumer-members. Yes, we strive to deliver affordable and reliable electricity to you, but equally important, we want our employees to return home safely to their loved ones. This requires ongoing focus, dedication, vigilance – and your help!

### Distractions can be deadly

While we appreciate your kindness and interest in the work of our crews, we ask that you stay back and let them focus on their task at hand. Even routine work has the potential to be dangerous, and it takes their full attention and that of their colleagues, who are also responsible for the team's safety. Distractions can have deadly consequences. If a lineworker is on or near your property during a power outage, for vegetation management or for routine maintenance, please allow them ample room to work. These small accommodations help protect our crews— and you.

If you have a dog, try to keep it indoors while lineworkers are on or near your property. While most dogs are friendly, some are defensive of their territory and can't distinguish between a burglar and a utility worker. Our crews work best without a pet "supervising" the job.

We recognize that for your family's safety, you want to make sure only authorized workers are on or near your property. You will recognize Kandiyohi Power Cooperative employees by their service trucks with our name and logo on them. You may also recognize our lineworkers because they live right here in our local community.

### Slow down and move over

In addition to giving lineworkers some space while they are near your property, we also ask that you move over or slow down when approaching a utility vehicle on the side of the road. This is an extra barrier of safety to help those who help all of us.



993141001

## KILOWATT CREDIT SCORECARD

Win a credit on your next bill.

Account numbers used are 9 digits, as appearing on your monthly bill. If you find your account number in this KILOWATT, please notify us by the 4th to claim your credit.

We will credit your bill. Do not deduct the amount from your bill; pay as usual. Jerald Tagtow claimed his account number and got \$5.00 credit. Each account number is worth \$5.00.



LIKE  
US ON  
FACEBOOK

WWW.FACEBOOK.COM/KANDIYOHIPowerCOOPERATIVE